

advantage[®]

Fast-acting flea treatment for cats and dogs

28

Lasts for up to
28 days protection



Kills fleas
through contact



Suitable for use
in cats and dogs



Fleas



Lice

Advantage flea treatment for cats, dogs and rabbits is an effective and easy-to-apply spot-on treatment that is able to kill fleas through contact, fleas don't have to bite your pet in order to be killed.

Advantage gets to work quickly and continues to kill fleas, for up to four weeks for cats and dogs, and up to one week for rabbits. It also kills flea larvae in the home.

[BUY NOW](#)

The Advantage® range



4x

Weight and product



Dog between
4 kg–10 kg



Advantage® 100 mg
Spot-On Solution

One pipette for dogs weighing between 4 kg and 10 kg



Dog between
10 kg–25 kg



Advantage® 250 mg
Spot-On Solution

One pipette for dogs weighing between 10 kg and 25 kg



Dog
> 25 kg



Advantage® 400 mg
Spot-On Solution

One pipette for dogs weighing between 25 kg and 40 kg; two pipettes for dogs weighing over 40 kg



Cat, dog or rabbit
< 4 kg



Advantage® 40 mg
Spot-On Solution

One pipette per cat, dog or rabbit weighing less than 4 kg



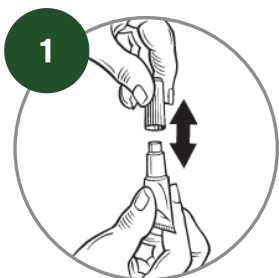
Cat and pet rabbits
> 4 kg



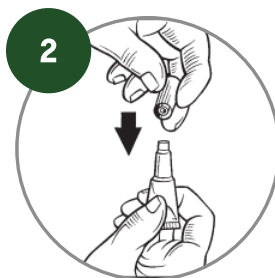
Advantage® 80 mg
Spot-On Solution

For large cats and rabbits weighing over 4 kg

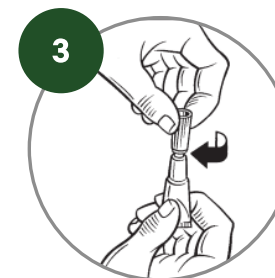
How to apply



Remove pipette from the package.



Hold pipette in an upright position, twist and pull off cap.



Use reversed cap to twist and remove seal from pipette.



Dogs < 25kg:

With the dog in the standing position, part the coat between the shoulder blades until the skin is visible. Place the tip of the pipette on the skin and squeeze firmly several times to empty the contents directly onto the skin.

For dogs > 25kg

The entire contents of the pipette(s) should be applied evenly to three or four spots all located at different application sites along the dog's backline from the shoulder to the base of the tail. At each spot part the coat until the skin is visible.



Cats and rabbits:

Part the hair on the pet's neck at the base of the skull until the skin is visible. Place the tip of the tube on the skin and squeeze firmly several times to empty its contents directly onto the skin.